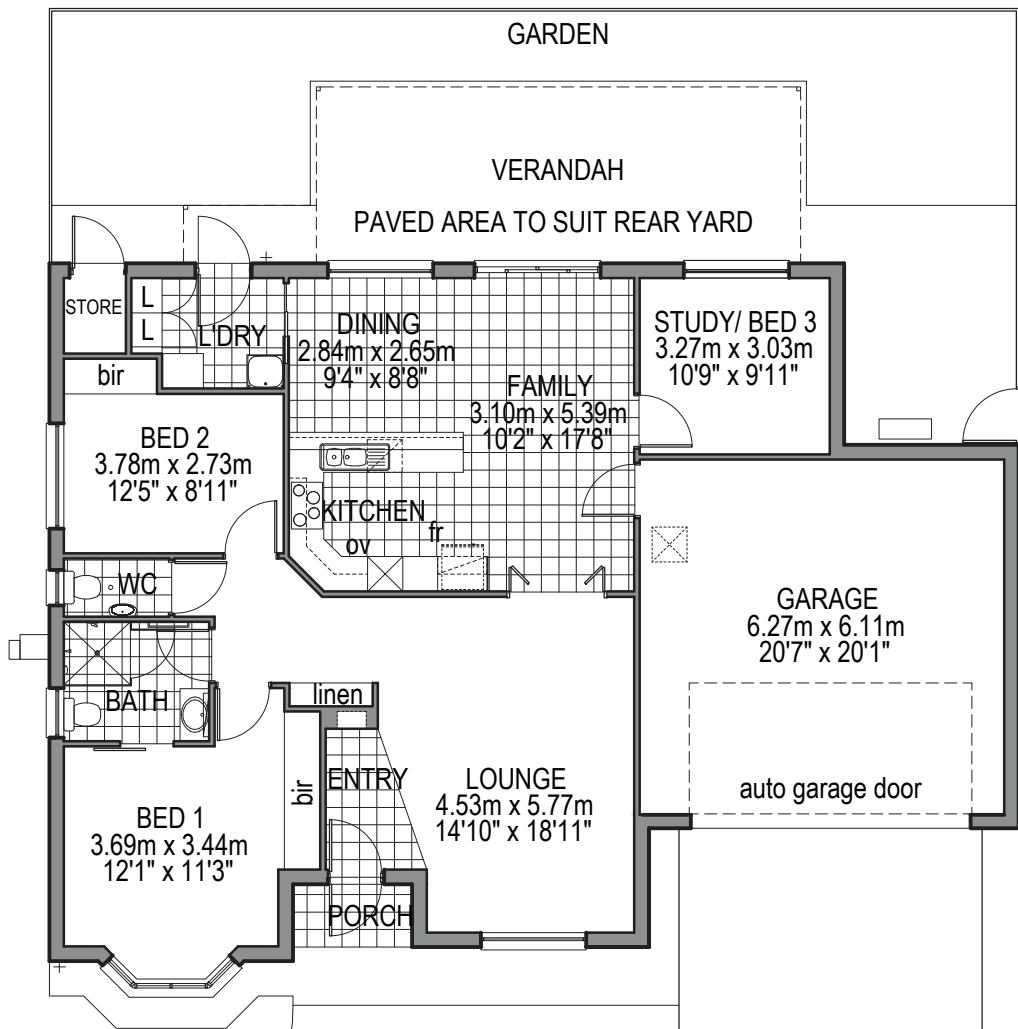


Evergreen

TYPE 3(D)

3 Bedroom Villa + Double Garage



LIVING...	130.89m ²	(14.08sq's)
GARAGE...	42.53m ²	(4.57sq's)
PORCH...	2.21m ²	(0.23sq's)
TOTAL...	175.63m ²	(18.9sq's)

Disclaimer: These plans are indicative only & subject to alteration. Final plans by agreement between the client & the company.



Wodonga Gardens
RETIREMENT ESTATE

2 Flinders Way, West Wodonga, VIC 3690 Ph. 1300 133 893
info@wodongagardens.com.au www.wodongagardens.com.au

Villas

Standard Finishes and Inclusions

External Features

- Secure front gate entry with camera vision in villa
- Private rear yards
- Coloured concrete patterned paving to rear yard
- Rear yard ready for resident planting
- Outback verandah
- Lift Up Clothes line
- Colorbond Good Neighbour Fencing
- Gas boosted Solar Hot Water Service
- Landscaped front garden
- Weatherproof GPO Powerpoint
- Security doors to front, rear and sliding glass door
- Automatic garage door

Internal Features

- 3 telephone / communication points
- 2 television points
- Smoke detectors / alarm
- Linen cupboard
- Aluminium windows
- Tiled entry, porch and dining
- Garage entry to villa
- Provision for Foxtel and Broadband
- Ducted reverse-cycle air to Type 3D
- Ceiling height 2700 (9ft) to Type 3D
- Robe in Bed 2

Kitchen

- Modern kitchen
- Stainless steel fan forced oven
- Ceramic cooktop and range hood, stainless steel finish
- Pantry
- Ceramic tiles
- 1.5 bowl sink with flip mixer tap
- Provision for future dishwasher
- Small bin in sink bench cupboard

Bathrooms

- Exhaust fans / heat lamps
- Bathroom walls / floors tiled
- Pivot shower screens
- Mixer tap to shower and basin
- Wall tiles to 2 metres high Type 3D

Laundry

- Well sized laundry
- Storage cupboard
- Stainless steel tub
- Ceramic tiles

